



Legacy II Series

Standard Equipment

Options & Floor Plans

"Leading the Industry to Excellence"
www.legacysleepers.com

ARI - Legacy Sleepers

860 North Tuscany Drive, P.O. Box 246
Shipshewana, IN 46565
Phone: (260) 768-4704 Fax: (260) 768-4983
www.legacysleepers.com
"Leading the Industry to Excellence"

Legacy II Series

Sleeper Sizes & Models

REAR BED (RB)

<input type="checkbox"/>	97" RB (1,880 lbs.)
<input type="checkbox"/>	108" RB (2,118 lbs.)
<input type="checkbox"/>	120" RB (2,355 lbs.)

<input type="checkbox"/>	132" RB (2,592 lbs.)
<input type="checkbox"/>	144" RB (2,844 lbs.)

REAR BED (RBSD)

<input type="checkbox"/>	144" RBSD (2,844 lbs.)
<input type="checkbox"/>	156" RBSD (3,096 lbs.)
<input type="checkbox"/>	168" RBSD (3,380 lbs.)

<input type="checkbox"/>	180" RBSDSF (3,621 lbs.)
<input type="checkbox"/>	180" RBSDBF (3,621 lbs.)

REAR DOOR FRONT SHOWER (RDFSUC)

<input type="checkbox"/>	132" RDFSUC (2,847 lbs.)
<input type="checkbox"/>	144" RDFSUC (3,099 lbs.)

<input type="checkbox"/>	156" RDFSUC (3,351 lbs.)
<input type="checkbox"/>	168" RDFSUC (3,624 lbs.)

ALL INCLUSIVE UPGRADED INTERIOR DECOR PACKAGES:

<input type="checkbox"/> Antique Slate	<input type="checkbox"/> Dark Knight III HFP	<input type="checkbox"/> Havana Rum II HFP	<input type="checkbox"/> Stone Saddle II HFP
--	--	--	--

Note: All Weights Are Approximate.

Note: Prices, specifications, and included features are subject to change without notice.

Legacy II Series

Exterior / Construction:

- OEM Style Boot Ring
- PACCAR Exterior Doors
- Structure is Pressure & Rain Bay Tested
- Tapered Aluminum Truss Rafters
- 1" x 2" Aluminum Wall Studs
- Meets Mercer Trans. Rear Wall Specifications
- ARI Cushion Ride Mounting System
- Fiberglass Wall Insulation - Cut & Fitted
- 3-1/2" Fully Insulated Floor
- Waterproof Smooth Underbelly
- Front Stainless Steel Radius Corners *
- Stainless Steel Aerofront *
- Entry Door w/ Screen & Deadbolt Latch*
- Entry Door Porch Light w/Interior Switch *
- Prep for Roof Air Conditioner
- Paint with 3-Year Warranty
- 304 Mirror Finish SS (Non-Magnetic)
- Stainless Steel Skirt - No Rivets!
- LED Clearance Lights in SS Skirt w/ 12" Ctrs
- Prep for Roof Air Foil
- Frame Mount Step**
- Deckplate with Frame Rail Hook Ups**
- LED Glow Grab Handle **
- Prep for 14" x 14" Window in Shower
- Prep for Future Satellite System

Appliance Systems:

- Sound Bar System w/ Sub Woofer, Blu-Ray
- TV Antenna with Booster
- Microwave Oven
- 30 Amp Shoreline - Marine Grade - Heavy Duty
- Automatic Transfer Switch
- 2800 or 1200 Watt Inverter/Charger w/Remote
- Refrigerator/Freezer
- Interior Water Fill Access - Fill Tank w/ Jug
- 30 to 36 Gallon Insulated Fresh Water Tank
- City Water Hookup
- Hot Water Heater - 6 Gallon Capacity
- Smoke Detector
- Heater/Air Conditioner & Wall Thermostat
- Auxiliary Heater/Air Conditioner (156" & 168")
- 32" TV, LED, HD, Smart TV
- Extra HDMI Recepts in A/V Cabinet Tied to TV
- Roof Vent w/ Remote & Smoked Ext. Cover
- Rain Cover for Roof Vent

Interior Features:

- Light Weight Aluminum Structure
- Hardwood Door Fronts
- Hidden Cabinet Door Hinges

Interior Features (continued):

- TV Cabinet with Storage Behind TV
- Door Struts in Overhead Cabinets
- Cabinets Lined for Noise Reduction
- Dividers in All Overhead Cabinets
- Entertainment Cabinet
- Recessed Hardwood Shadow Box**
- Seamless Fiberglass Shower with 13-Gal. Holding Tank & Built-In Cassette Toilet
- High Press., Water Saving, Shower Head
- Single Lever Shower Faucet Control Valve
- Shower Diverter Valve - Recycles Cold Wtr
- Towel Hooks in Shower
- Corner Tray in Shower
- Hardwood Shower Door with Mirror
- Mattress
- Bed Restraint
- Bed/Dinette w/ Self Storing Table & Self Storing Cushions w/ 80 lb. Struts **
- High Density 10 Year Cushion Foam *
- Brass Water Line Fittings
- Premium Water Lines w/ SS Constant Tension Clamps
- Water Pressure Relief Valve
- Water Fill Hose
- Heat & AC to Shower Area
- Soap Dispenser in Shower
- Carbon Monoxide Detector
- Battery Voltage Monitor
- Electrical Wiring Encased in Loom
- GFI Kitchen Receptacle
- USB Receptacle
- Oversized Rocker Light Switches
- LED Light Fixtures
- LED Auto Lights in Wardrobe & Sink Cab.*
- Cedar Floor In Wardrobes
- Undermount Stainless Steel Sink
- Décor High Rise Sink Faucet with Sprayer
- Towel Bar in Sink Cabinet
- Magnetic Strip to Boot Curtain
- Premium Grade Residential Linoleum
- Coat Hooks in Living Area
- Insulated Window Inserts
- Frameless Windows
- 24"x 16" Window w/ Hardwood Trim & Day/Night Shade PS*
- Prep for 24"x16"Window on DS*
- Egress Window & Hardwood Trim w/ Day Night Shade PS (RB Models Only)

*Where Applicable ** Legacy II Rear Door Models Only

Note: Prices, specifications, & included features are subject to change without notice

Legacy II Series

OPTIONS

lbs.

lbs.

Boot Kits:

- _____ - 2nd OEM Style Boot Ring for Cab Side
- _____ - KW Aerocab After Market Kit
- _____ - ARI KW Extended Day Cab Kit
- _____ - Upcharge & Boot Ext. for Non Pete, KW & FL

High Cab Conversions:

- _____ 205 Freightliner Cascadia High Cab Conversion
Delete Aerofront & Stainless Steel Front Corners
- _____ 205 Kenworth T680/T880 High Cab Conversion
Delete Aerofront & Stainless Steel Front Corners
- _____ 205 Peterbilt 567/579 High Cab Conversion
Delete Aerofront & Stainless Steel Front Corners
- _____ 15 Add Paccar Visor to High Cab Conv. Kit w/ LED Lights
- _____ 185 Volvo High Cab Conversion
Delete Aerofront & Stainless Steel Front Corners
- _____ 205 Western Star High Cab Conversion
Delete Aerofront & Stainless Steel Front Corners

Side Door Upgrades:

- _____ - Upgrade to Linoleum in Stepwell Area
- _____ - LED Strip Lighting to Stepwell Treads
- _____ 10 Stainless Steel & (2) Clearance Lights to Side Door
- _____ 5 Stainless Filler Panel to Front of Side Door Stepwell

Interior Modules & Upgrades:

- _____ 195 Bed Dinette with Self-Storing Table, Self-Storing
Cushions & Bed Struts, Delete Fixed Rear Bed
- _____ 10 Add (2) Wedge Cushions to Dinette Seats
- _____ 35 Electric Upper Bunk With Remote Panel in Place
of Overhead Cabinets.
- _____ 35 Desk with Drawer and Overhead Cabinet in
Place Cabinet Stack (**PS on RDFSUC 156"**)

Misc. Interior Options:

- _____ - Oversize Bed Area to 54"/Reduce Cabinet & Counter
Space, Oversize Window (**156" & 168" RBSD Only**)
- _____ 5 Medicine Cabinet w/ Mirror & Adj. Shelf (**108" & Up**)
- _____ - Upgrade to Memory Foam Mattress
- _____ 45 Upgrade to Hardwood Dinette Bases
- _____ 1 Vinyl Mattress Curtain
- _____ 23 Add 2 Drawers to Wardrobe Closet
- _____ 35 Add 3 Drawers to Wardrobe Closet

Heating & Cooling:

- _____ 1 Hardwood Trim to Roof Vent
- _____ 93 Roof A/C with Ducted Air & Heat Strip
- _____ - Paint Interior Roof A/C Shroud Black to Match Interior
- _____ 9 Baseboard Heater 110 Volt - ARI Std. Location
- _____ 30 Install Customer Supplied (C/S) Diesel Heater

Appliances:

- _____ 10 Microwave/Convection Oven with Air Frying Option *
- _____ 10 Single or Double Induction Cooktop
- _____ 3 Hardwood Trim to Refrigerator Opening

Entertainment:

- _____ 20 Upgrade to 43" Smart TV, UHD
- _____ 33 In-Motion Satellite System (Dish Net, HD Ready)
- _____ 3 Upgrade Satellite Receiver to DVR

Water System:

- _____ 2 Tank Monitor for Fresh Water Tank(s)
- _____ 15 2nd Fresh Water Tank to Interior Cabinet Space
- _____ 5 Delete Shower Holding Tank
- _____ 5 Heating System for Water Lines
90 Day Limited Warranty

Countertop & Backsplash Options:

- _____ 1 Sink Cover/Cut Board (Non Solid Surface Only)
- _____ 20 Upgrade to Solid Surface Countertop
- _____ 10 Upgrade to Solid Surface Gaucho Table
- _____ 5 Upgrade to Solid Surface Desktop (with option)
- _____ 3 Upgrade to Solid Surface Flip Up Counter (**RBSD**)
- _____ 8 Solid Surface Sink Cover
- _____ 8 Recess Cooktop with Solid Surface Cover
- _____ 35 Backsplash - Mirror Finish Stainless Above Counte
- _____ 5 Backsplash - PVC Tile Above Countertop

Interior Lighting:

- _____ 4 Add LED Soft White Strip Lighting to All OHC's
- _____ 1 Décor Light Mounted on Ceiling (**108" & Up**)
- _____ 1 Décor Reading Light in Main Bed Area
- _____ - Dimmer Switch for Ceiling Lights
- _____ - Dimmer Switch for Bed or Dinette Lights
- _____ 1 LED Strip Light Below Countertop Lip (Blue)
- _____ 15 Ceiling Lgt Package - Wood Trim, Mirrors, LED Stri
- _____ 1 LED Strip Light Below the Rear Door (Blue)
- _____ 3 LED Strip Light in Shadow Box (**RD Models Only**)
- _____ - 3 Way Switch in Cab Tied to Counter Lights

Power Systems:

- _____ 530 Onan Quiet Diesel 7500 Watts 3 cyl w/ SS Box
- _____ n/a Onan Auto Generator Start with HVAC
- _____ 530 Powertech 8k Gen with Auto Start & SS Box
- _____ - Onan Start/Stop Switch to Cab Dash Panel
- _____ 35 Wire for Future Generator
- _____ 55 (2) Golf Cart Batteries with Solenoid

Air Ride Systems:

- _____ 45 Cabmate Air Ride For Tractor
- _____ 90 3 Bag Air Ride System (**120" & Under**)
- _____ 110 5 Bag Air Ride System (**132" & Up**)
- _____ 2 Ride Control Valves for Air Ride System

Exterior Options:

- _____ - Special Color Paint (Non White)
- _____ 30 Fiberglass Wind Deflector
- _____ 30 Deckplate with Super Step (**RB Models**)
- _____ 75 Awning, Electric, 12' Length, 144" and Up
- _____ 45 Extend Exhaust to Rear of Sleeper w/ Deflector

Note: All weights are approximate.

* - Microwave/Convection Oven REQUIRES Generator or Shoreline.

Note: Prices, specifications, and included features are subject to change without notice.

Legacy II Series

OPTIONS

lbs.

Standard Tool Box Sizes:

_____	110	Stainless Steel Tool Box 40" with 1 Door
_____	33	Oversize 40" Box To 52" with 2 Doors
_____	66	Oversize 40" Box To 60" with 2 Doors
_____	110	Stainless Steel DEF Tank Cover 20" to 30"

Fairing Enclosures:

_____	23	Side Fairings DS & PS
_____	34	Stainless Steel Fairing Enclosures DS & PS
_____	35	U-Shaped Side Fairings
_____	51	U-Shaped Stainless Steel Fairing Enclosures

Stainless Upgrades:

_____	4	Stainless Steel Below Cab Doors
_____	16	Stainless Steel Behind Top Clearance Lights
_____	-	Stainless Steel Front Wall
_____	-	Stainless Steel Rear Wall Flat
_____	-	Stainless Steel Rear Wall With 4" Pleats
_____	-	Stainless Steel Rear Wall With 6" Diamonds

Exterior Lights:

_____	8	LED Clearance Lights Top of Sleeper (Bottom Std.)
_____	2	6 LED Clearance Lights Below Cab Doors
_____	-	Upgrade Clearance/Bus/Bullet Lights to Clear Lenses
_____	1/2	1 Pair LED Load Lights (Red)
_____	1/2	1 Pair LED Load Lights (Clear/White)
_____	4	Wire Red Load Lights - Stop/Turn/Tail
_____	3	1 Pair Docking Lights - Various Std. Locations
_____	2	5 LED (1-3-1) Bus Lights (108" & Up)
_____	2	5 LED (1-3-1) Bullet Lights (108" & Up)

Exterior Doors:

_____	18	Tool Compartment Door DS Rear (RB Only)
_____	14	Full Door in Place of Egress Window On PS

Windows:

_____	6	14" x 14" Frameless Window in Optional Full Door on PS with Wood Trim & Shade (RB Only)
_____	2	14" x 14" Frameless Window in Shower
_____	8	30" Framed Aero Window with Trim & Shade
_____	8	24" x 16" Frameless Window DS with Trim & Shade
_____	2	14" x 14" Frameless Window in Rear Door

Other:

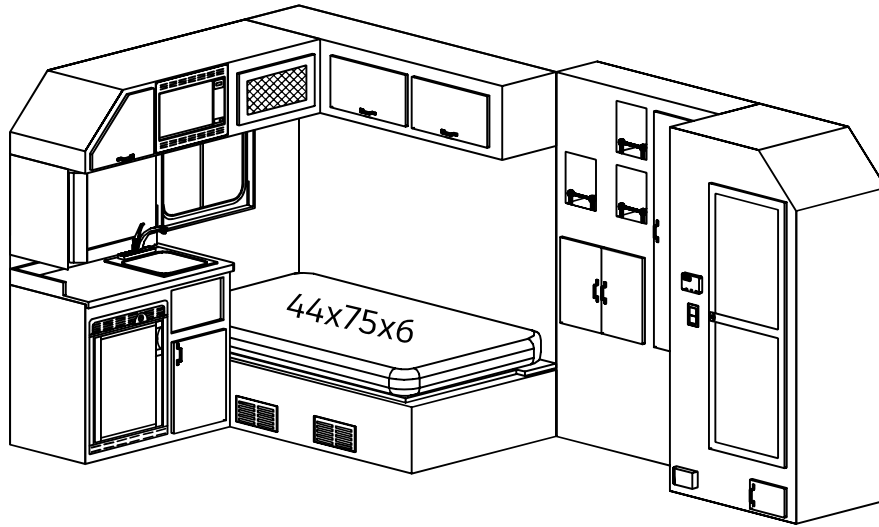
_____	-	Upgrade to Spray Foam Insulation
-------	---	----------------------------------

Note: All weights are approximate.

* - Microwave/Convection Oven REQUIRES Generator or Shoreline.

Note: Prices, specifications, and included features are subject to change without notice.

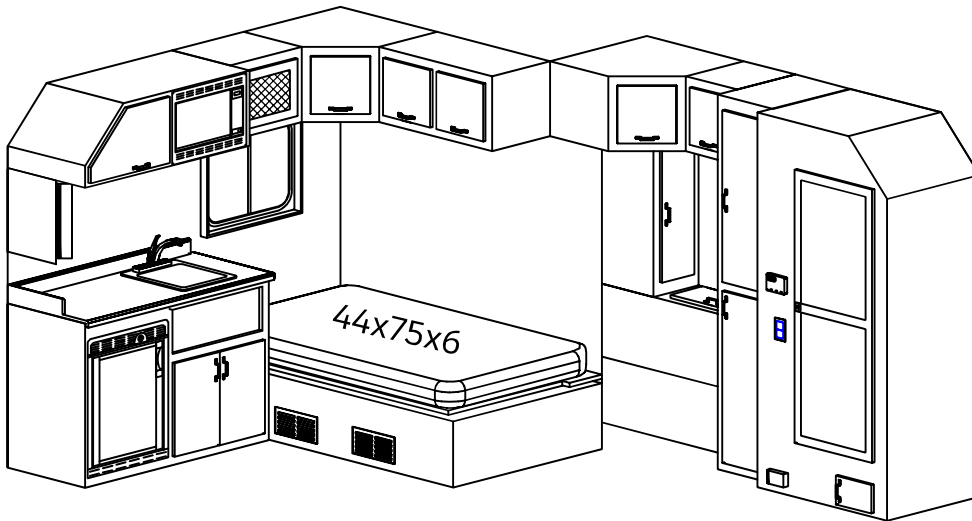
97" REAR BED (RB)



97" RB - Interior cabinets:

- * L-shaped overhead cabinet
- * Wardrobe on driver-side end of bed
- * Double door cabinet

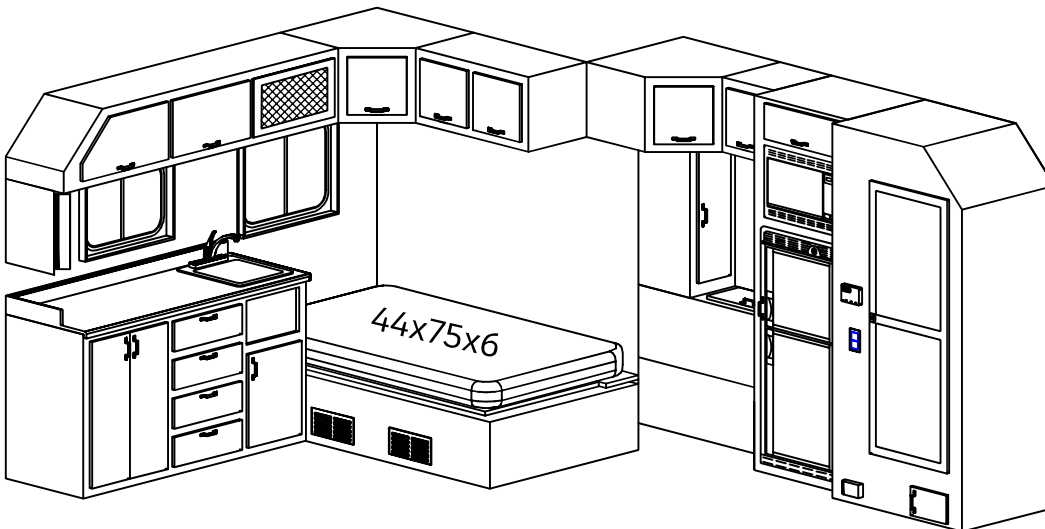
108" REAR BED (RB)



108" RB - Interior cabinets:

- * Angled U-shape overhead cabinet
- * Bunk end storage on driver-side
- * Double stack wardrobes on driver-side
- * Single door cabinet on driver-side

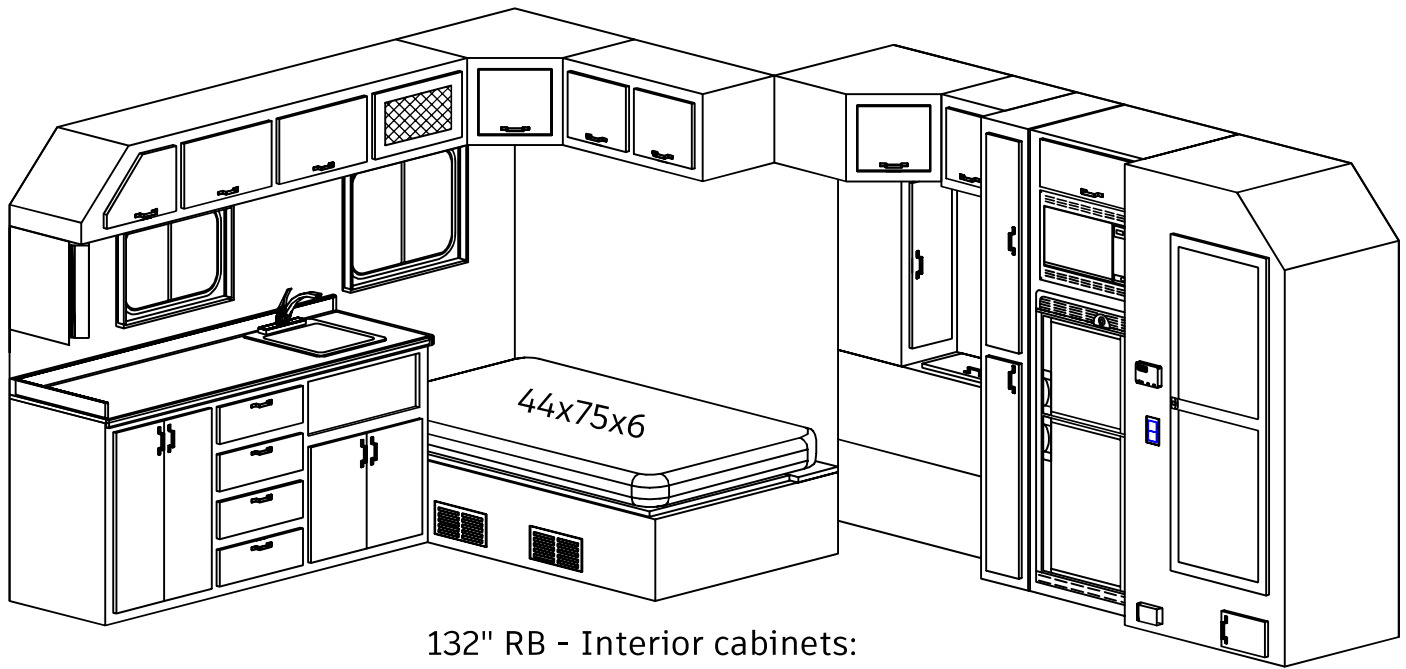
120" REAR BED (RB)



120" RB - Interior cabinets:

- * All 108" RB cabinets plus more space
- * Large refrigerator
- * Larger countertop area
- * 4 drawers below counter
- * Double door wardrobe below counter
- * Double door overhead cabinet passenger-side

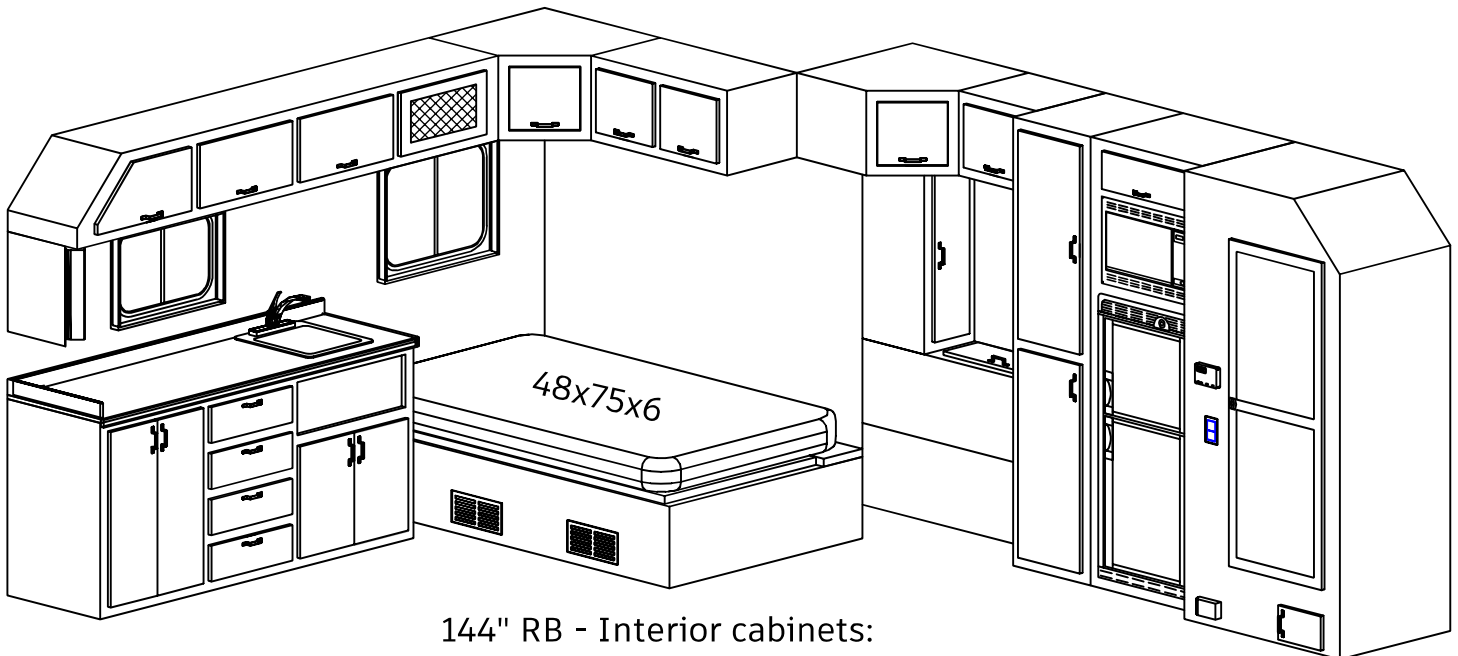
132" REAR BED (RB)



132" RB - Interior cabinets:

- * All 120" RB cabinets plus more space
- * Double stack wardrobes on driver-side
- * Larger countertop area

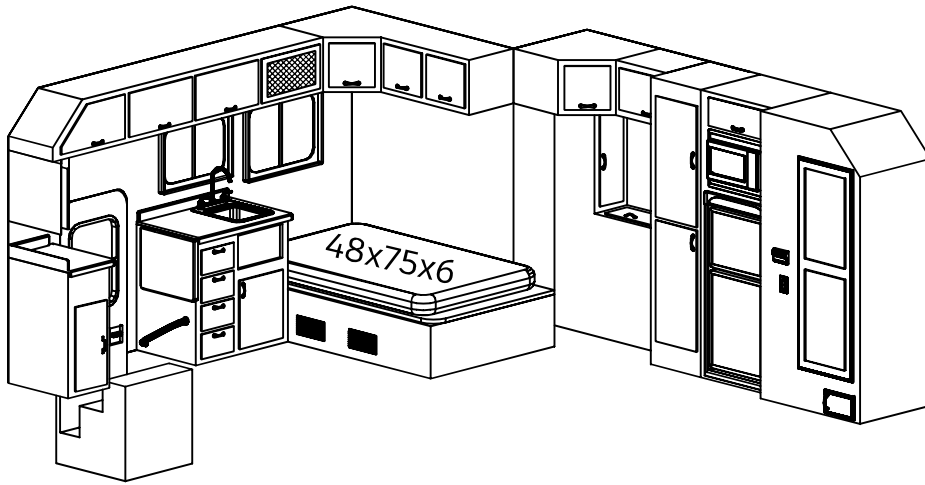
144" REAR BED (RB)



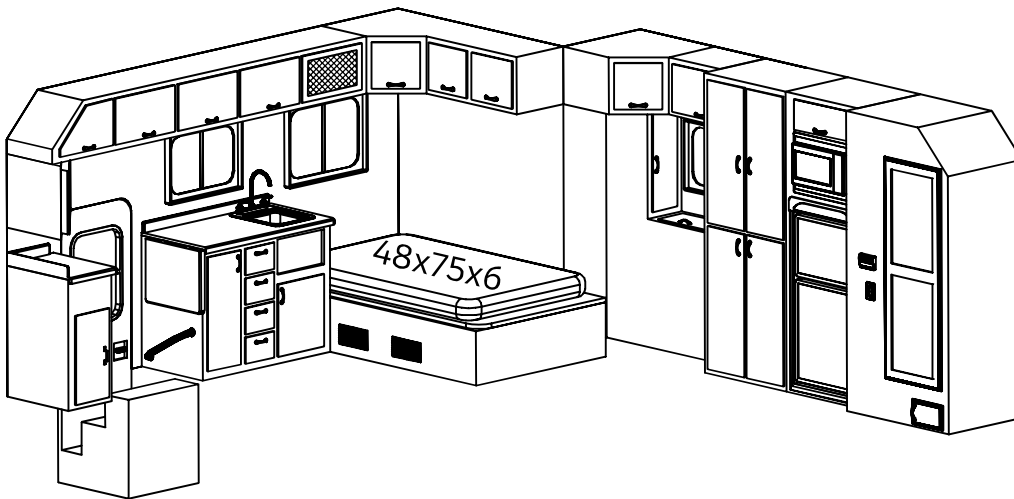
144" RB - Interior cabinets:

- * All 132" RB cabinets plus more space
- * Upgrade to 48" bed
- * Additional 8" of wardrobe space on driver-side

144" REAR BED w/ SIDE DOOR (RBSD)



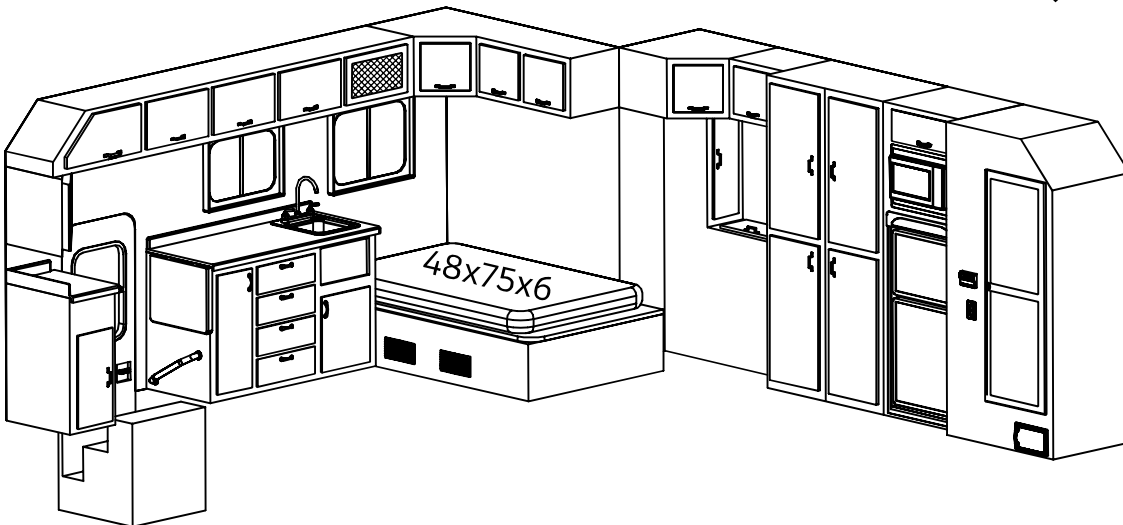
156" REAR BED w/ SIDE DOOR (RBSD)



156" RBSD - Added interior features:

- * All 144" RBSD cabinets
- * Additional 12" of cabinet stack space on DS
- * 12" pantry in sink cabinet

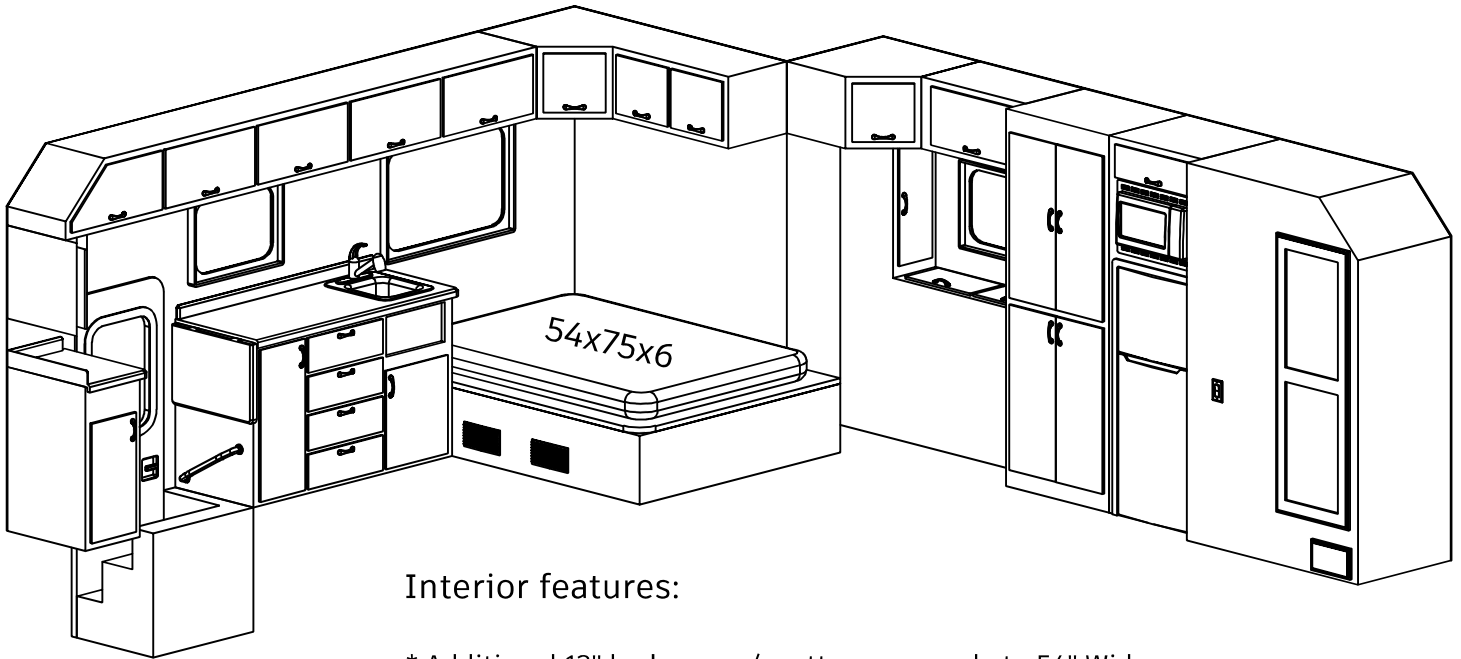
168" REAR BED w/ SIDE DOOR (RBSD)



168" RBSD - Added interior features:

- * All 156" RBSD cabinets
- * Additional 12" of cabinet stack space
- * Additional 12" of drawer space in sink cabinet

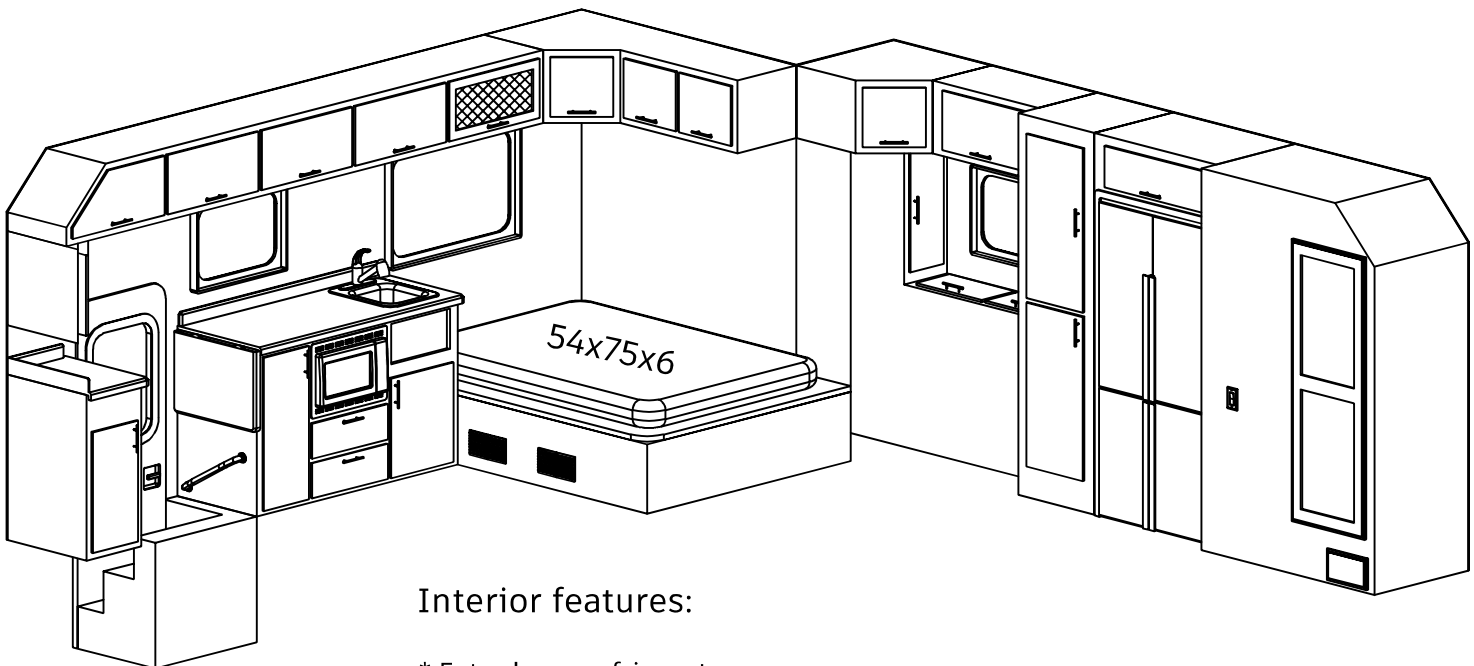
180" REAR BED w/ SIDE DOOR (RBSDSF)



Interior features:

- * Additional 12" bed area w/ mattress upgrade to 54" Wide
- * Extra large shower / bath
- * Oversized window in passenger-side bed area

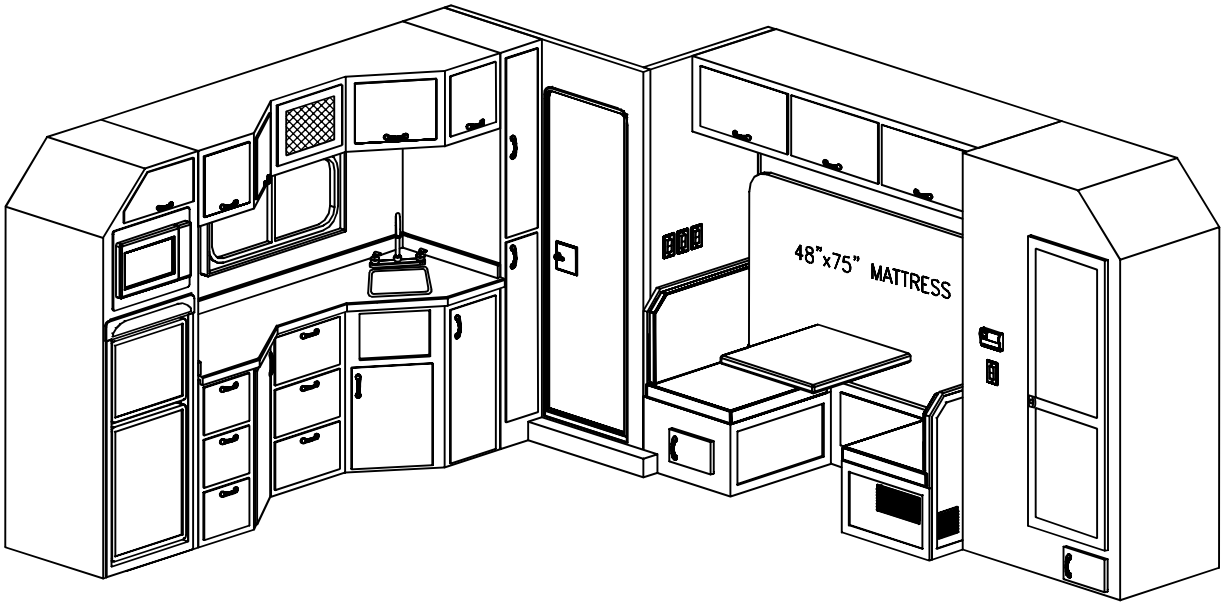
180" REAR BED w/ SIDE DOOR (RBSDBF)



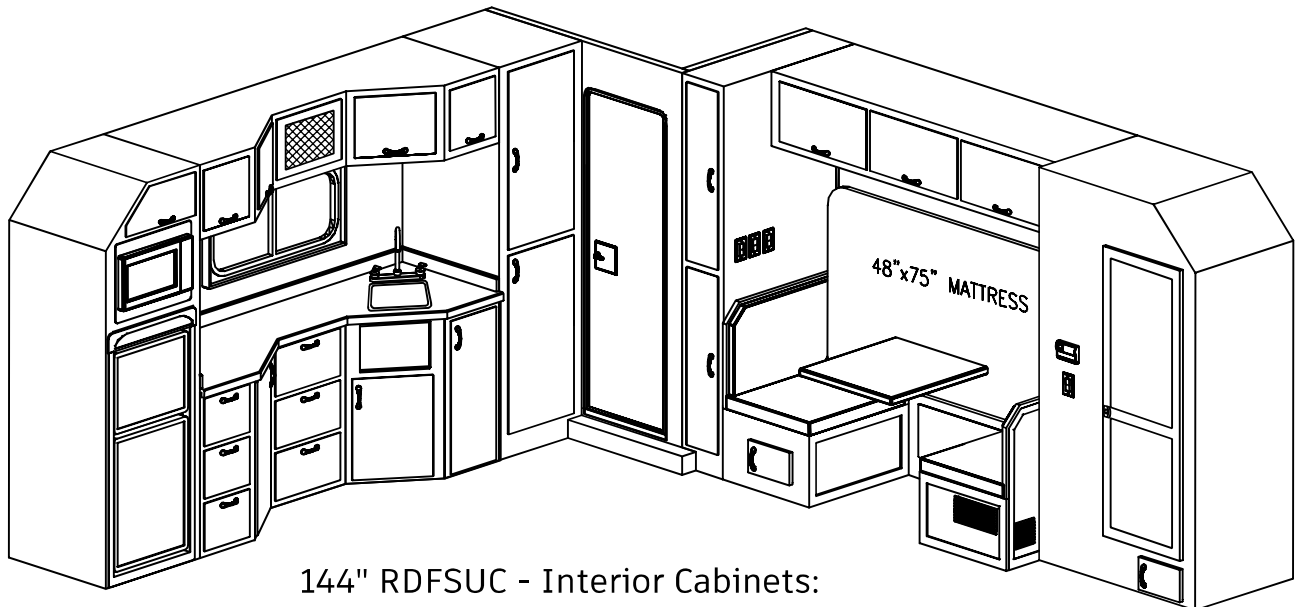
Interior features:

- * Extra large refrigerator

132" REAR DOOR - FRONT SHOWER W/ U-SHAPED COUNTERTOP (RDFSUC)



144" REAR DOOR - FRONT SHOWER W/ U-SHAPED COUNTERTOP (RDFSUC)

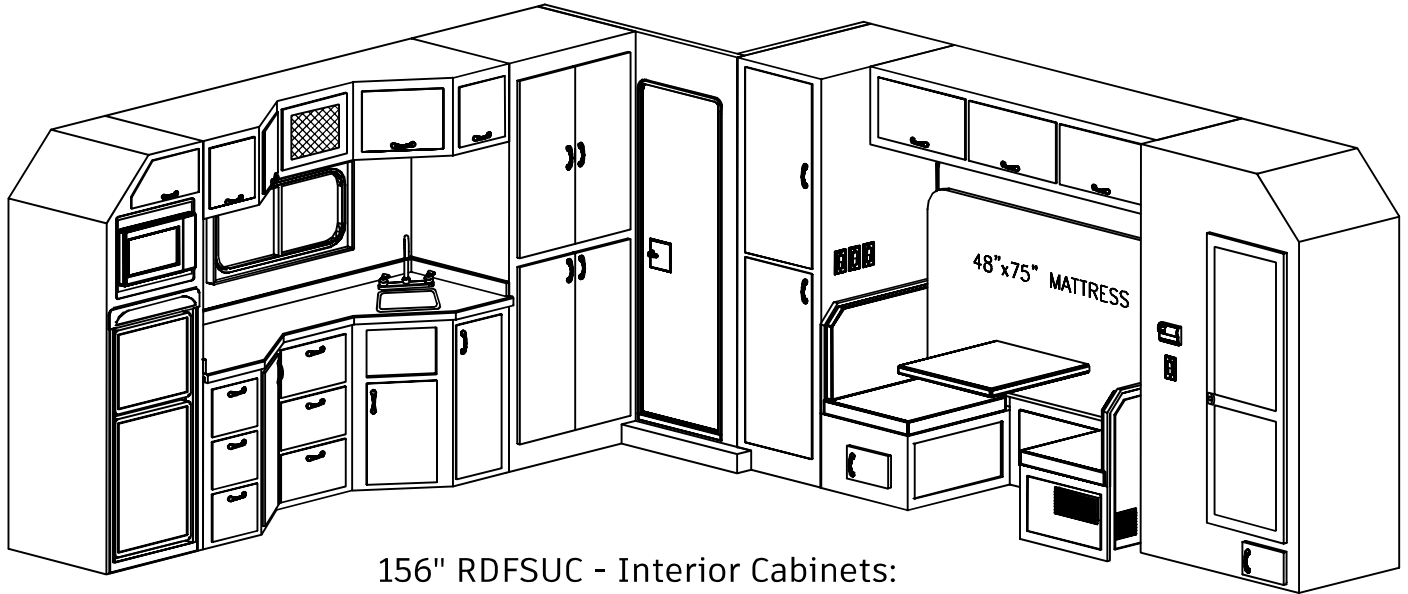


144" RDFSUC - Interior Cabinets:

* All 132" RDFSUC cabinets *plus* more space

* Additional 12" of cabinet space driver & passenger side

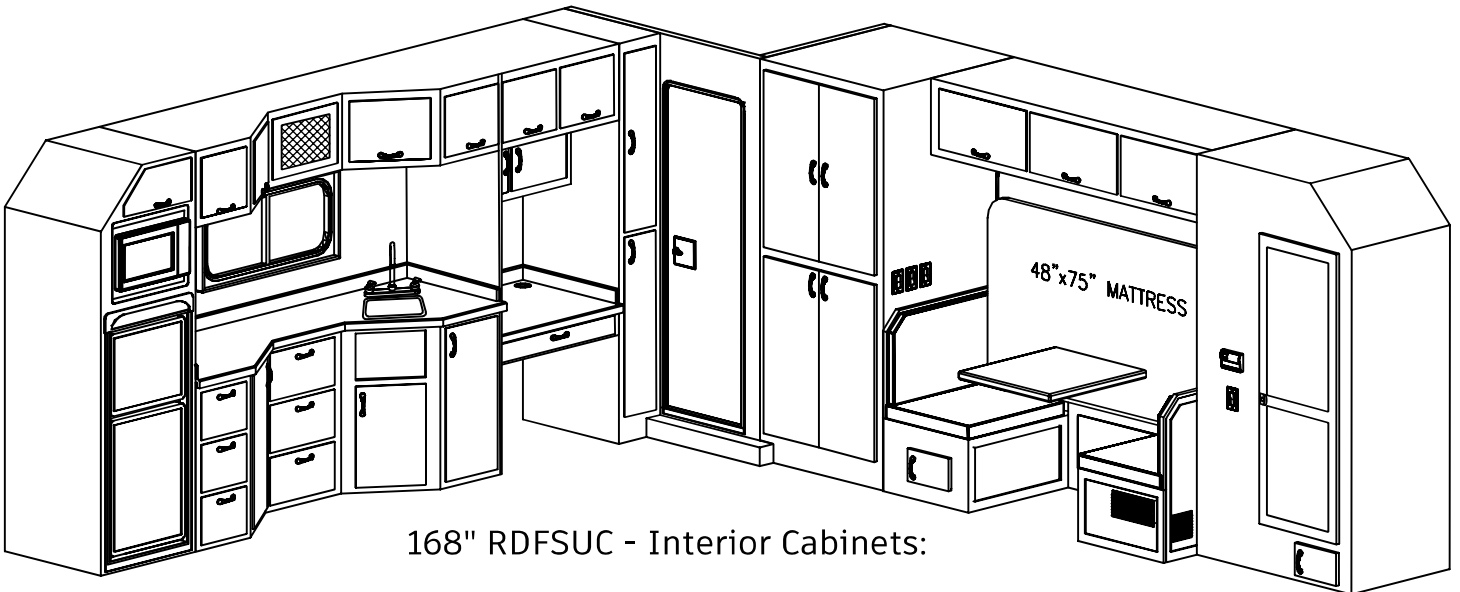
156" REAR DOOR - FRONT SHOWER W/ U-SHAPED COUNTERTOP (RDFSUC)



156" RDFSUC - Interior Cabinets:

- * All 144" RDFS cabinets *plus* more space
- * Additional 12" of cabinet space driver & passenger-side

168" REAR DOOR - FRONT SHOWER W/ U-SHAPED COUNTERTOP (RDFSUC)



168" RDFSUC - Interior Cabinets:

- * All 156" RDFSUC cabinets *plus* more space
- * Additional 12" of cabinet space drives-side
- * Large desk & two door cabinet on passenger-side



ARI - Legacy Sleepers

Phone: (260) 768-4704 Fax: (260) 768-4983

www.legacysleepers.com

Compare Us To Our Competition!

	Legacy II Series (Included)	Legacy Custom Series (Included)	Competition (Included)	Retail Value \$
ARI Cushion Ride Mounting System (We never solid mount a sleeper!)	Yes	Yes		\$750
Cab to Sleeper Boot - Serviceable at any Peterbilt dealer.	Yes	Yes		\$447
Pressure Tested Structure - Guaranteeing No Water Leaks	Yes	Yes		\$130
1" x 2" Aluminum Wall Studs	Yes	Yes		\$335
3-1/2" Fully Insulated Floor	Yes	Yes		\$632
Waterproof Smooth Underbelly	Yes	Yes		\$259
Front Stainless Steel Corners	Yes**	Yes**		\$201
304 Mirror Finish Stainless Steel (Non-Magnetic!)	Yes	Yes		\$144
Stainless Steel Aerofront	Yes**	Yes**		\$270
72" Rear Door w/Screen & Dead Bolt Latch	Yes ***	Yes ***		\$544
Rear Door Porch Light with Interior Switch	Yes ***	Yes ***		\$65
Seamless Gelcoat Exterior Walls	Yes	Yes		\$375
Rain Cover for Roof Vent	Yes	Yes *		\$71
Hinged TV Cabinet with Storage Behind TV	Yes	Yes *		\$510
Remote HDMI Connections	Yes	Yes *		\$97
Surround Sound System with Subwoofer & Blu-Ray	Yes	Yes *		\$382
City Water Connection	Yes	Yes *		\$91
Brass Water Line Fittings	Yes	Yes		\$95
Premium Water Lines with Stainless Constant Tension Clamps	Yes	Yes		\$125
Insulated Water Tank (No Condensation)	Yes	Yes		\$105
Water Pressure Relief Valve	Yes	Yes		\$57
Water Fill Hose & Anti-siphon Feature	Yes	Yes		\$45
Climate Controlled Shower	Yes *	Yes *		\$260
Water Heater Switch (20 Amp Illuminated)	Yes	Yes		\$52
Block Heater Switch (20 Amp Illuminated)	Yes	Yes		\$52
Battery Voltage Meter	Yes	Yes		\$95
4/0 Battery Cable	Yes *	Yes *		\$275
Automatic 120 Volt Transfer Switch	Yes	Yes		\$291
Heavy Duty 30 Amp Marine Shoreline	Yes	Yes		\$225
All Electrical Wiring Encased in Loom	Yes	Yes		\$173
GFI Kitchen Receptacle	Yes	Yes		\$45
Upgraded Easy-to-Use Rocker Light Switches	Yes	Yes		\$35
LED Glow Grab Handle at Rear Door	Yes ***	Yes *		\$129
High-Density 10-Year Cushion Foam	Yes **	Yes *		\$170
One-Piece Seamless Fiberglass Shower with Toilet & Holding Tanks	Yes	Yes *		\$3,433
Shower Water Diverter Valve - Recycles Cold Water	Yes	Yes *		\$140
Soap Dispenser Installed in Shower	Yes	Yes *		\$35
Insulated Window Inserts	Yes	Yes *		\$40
Premium Grade Residential Style Linoleum	Yes	Yes *		\$454
Hardwood Window Trim with Day/Night Shades	Yes	Yes *		\$81
Auto LED Lights in Wardrobe Closet	Yes **	Yes *		\$65
Cedar Lined Floor in Wardrobes	Yes **	Yes *		\$110
Hardwood Flat Panel Doors	Yes	Yes *		\$644
			MINIMUM VALUE ADDED	\$12,534

* - Included with purchase of the respective feature. For example, insulated window inserts are included with the purchase of a window.

** - Included if the respective LII floor plan permits. See LII brochure for a complete listing of what is included by floor plan.

*** - Included in any floor plan that allows a rear door.

Note: Prices, specifications and included features are subject to change without notice.

Satisfied ARI Customers

"You guys did an awesome job! We are speechless. Truck looks great, we love the viper blue color. ARI, you guys are the best. Special thanks to the sales team who went above and beyond, answered all of our questions (which were many) and helped walk us through building our very first big bunk sleeper. There is only one company that will ever build our custom sleepers, and ARI, you are that company. May God bless you all. Thank you!" - Tommy & Sandra Cannon

"Five star service and a five star product by five star people. We love our ARI sleeper and all of the people there too. Very rarely have I come across or done business with a company so centered around customer satisfaction. As far as I am concerned, there is only one custom sleeper company. That company is ARI." - AJ Van Harn

"ARI has the best customer service. I haven't had to call them much but when I do they walk me through whatever troubleshooting needs to be done." - Mike Hary

"ARI, hands down, has awesome customer service! And their hospitality is above reproach! They are a small shop but they make the best quality big bunk on the market, you get what you pay for." - Dennis & Sandra Johnson

"Going to an ARI sleeper was the best decision we ever made in the 34 years my wife and I have been trucking. You people are the best! Thanks! - David Wilmot

"Leading the Industry to Excellence"
www.legacysleepers.com